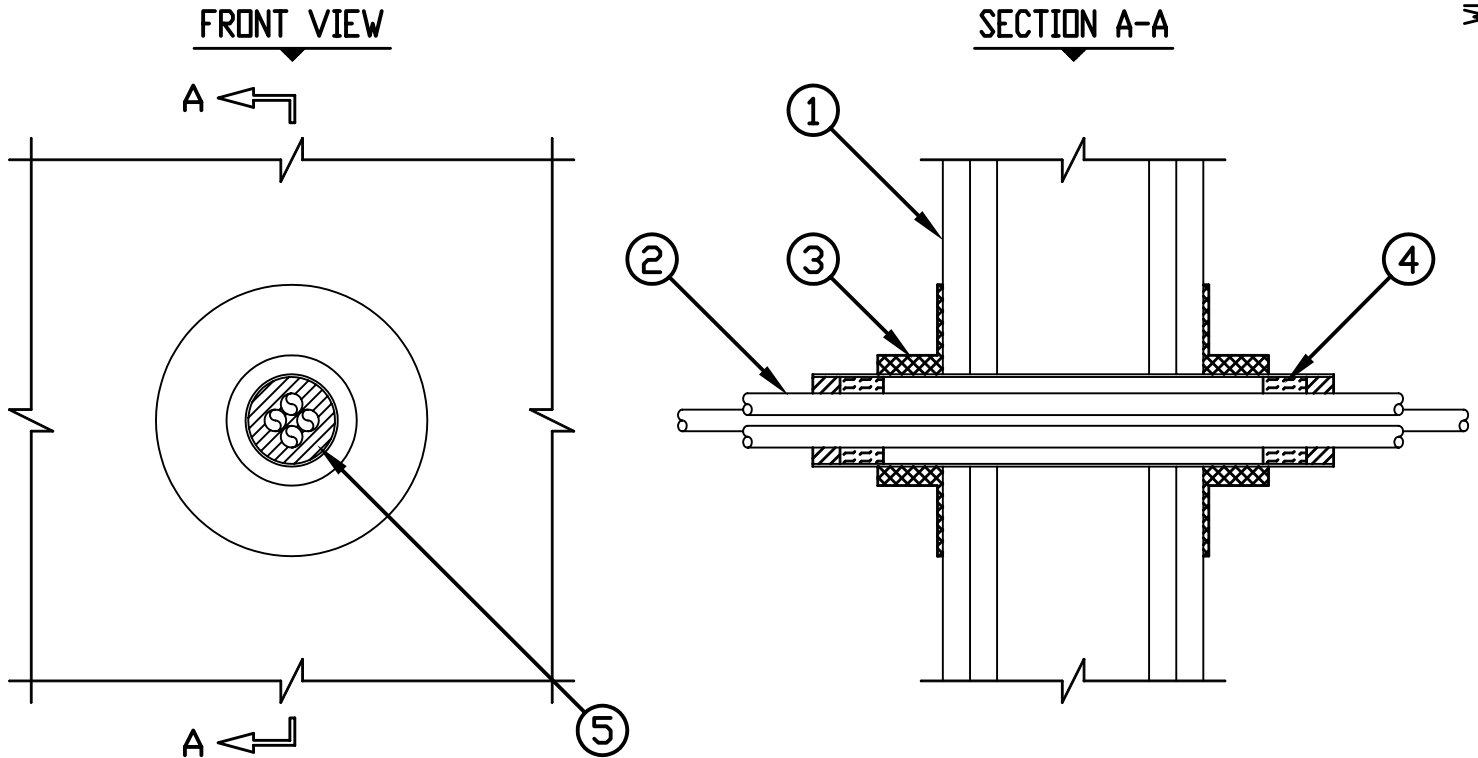


CABLE BUNDLE THROUGH "UNIQUE FIRESTOP SLEEVE" IN 1-HR. OR 2-HR. FIRE-RATED GYPSUM WALL ASSEMBLY

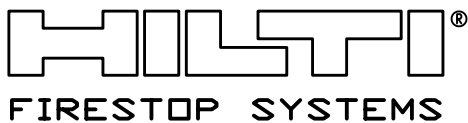
F-RATING = 1-HR. OR 2-HR.
T-RATING = 0-HR.

WL3122c-071504



1. GYPSUM WALL ASSEMBLY (UL/cUL CLASSIFIED U300 OR U400 SERIES WALL) (1-HR. OR 2-HR. FIRE-RATING) (2-HR. SHOWN).
2. CABLE BUNDLE TO CONSIST OF ANY OF THE FOLLOWING :
 - A. MAXIMUM 300 KCMIL SINGLE CONDUCTOR POWER CABLE WITH PVC JACKET.
 - B. MAXIMUM 4 PAIR NO. 24 AWG TELEPHONE CABLE WITH PVC JACKET.
 - C. MAXIMUM 3/C NO. 12 AWG CABLE WITH PVC JACKET.
3. UNIQUE FIRESTOP PRODUCTS, DIVISION OF "IT'S UNIQUE" INC. SMOOTH SLEEVE, THREADED SLEEVE, OR SPLIT SLEEVE (1", 2", AND 4" SIZES).
4. (OPTIONAL). MINIMUM 1" THICKNESS MINERAL WOOL (MINIMUM 4 PCF DENSITY) TIGHTLY PACKED AND RECESSED TO ACCOMMODATE FIRESTOP PUTTY.
5. MINIMUM 5/8" THICKNESS HILTI CP 618 FIRESTOP PUTTY STICK.

NOTES : 1. MAXIMUM DIAMETER OF OPENING IN WALL FOR 1", 2", AND 4" SIZES ARE 1-1/8", 2-1/4", AND 4-1/2", RESPECTIVELY.
 2. CABLES TO FILL MAXIMUM 36% OF CROSS-SECTIONAL AREA OF OPENING.
 3. (NOT SHOWN). MINIMUM 1/2" BEAD HILTI FS-ONE INTUMESCENT FIRESTOP SEALANT SHALL BE APPLIED AROUND THE PERIMETER OF THE FIRESTOP DEVICE ON EACH SIDE OF GYPSUM WALL ASSEMBLY.



HILTI, Inc.
Tulsa, Oklahoma USA (918) 252-6000

| | |
|-------|---------------|
| Sheet | 1 of 1 |
| Scale | 3/16" = 1" |
| Date | July 15, 2004 |

Drawing No.
WL
3122c