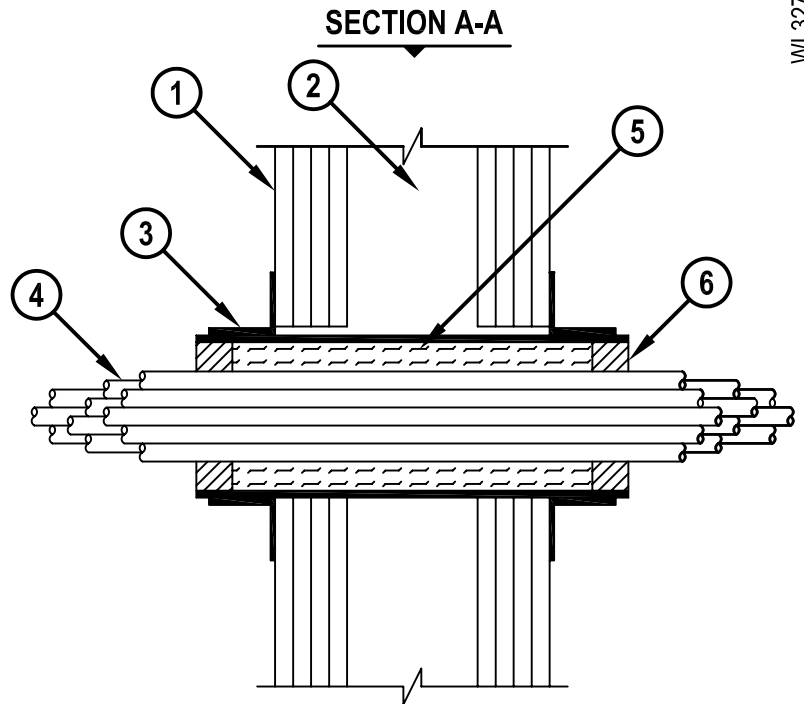
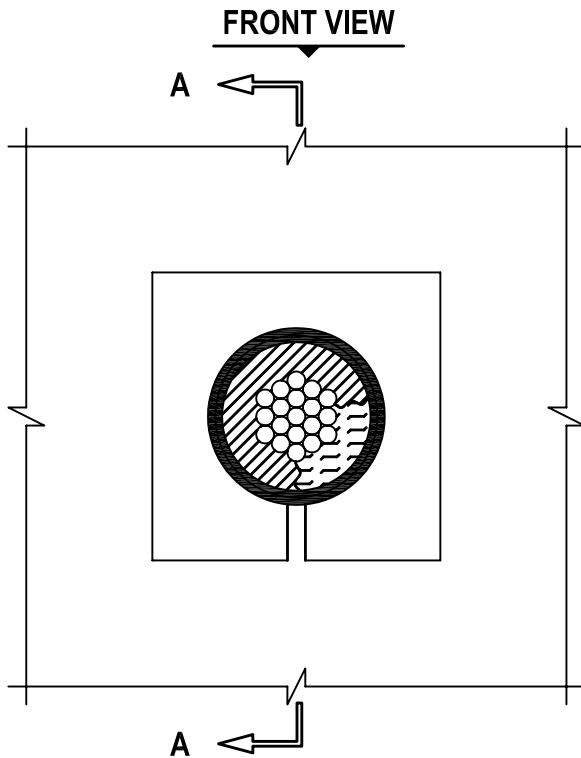


**CABLE BUNDLE THROUGH "UNIQUE FIRESTOP SLEEVE" IN 3-HR. OR 4-HR. FIRE-RATED GYPSUM WALL ASSEMBLY**

F-RATING = 3-HR. OR 4-HR.  
T-RATING = 3-HR.

WL3273a.0532505



1. GYPSUM WALL ASSEMBLY (UL/cUL CLASSIFIED U400 OR V400 SERIES) (3-HR. OR 4-HR. FIRE-RATING) (4-HR. SHOWN).
2. [NOT SHOWN] STEEL STUDS TO BE MINIMUM 3-1/2" WIDE.
3. SPLIT SLEEVE OR THREADED SLEEVE (1", 2" AND 4" SIZES) MANUFACTURED BY UNIQUE FIRESTOP PRODUCTS, INC. INSTALLED PER ACCOMPANYING INSTALLATION INSTRUCTIONS.
4. CABLE BUNDLE TO CONSIST OF ANY OF THE FOLLOWING :
  - A. MAXIMUM RG59/U COAXIAL CABLE WITH PVC JACKET.
  - B. MAXIMUM 62.5/48 FIBER-OPTIC CABLE WITH PVC JACKET.
  - C. MAXIMUM 4 PAIR NO. 24 AWG COPPER CONDUCTOR DATA CABLE WITH PVC JACKET.
5. MINERAL WOOL (MIN. 4 PCF DENSITY) TIGHTLY PACKED WITHIN THE SLEEVE AND RECESSED FROM EACH END OF DEVICE TO ACCOMMODATE FIRESTOP PUTTY.
6. MINIMUM 1" DEPTH HILTI CP 618 FIRESTOP PUTTY STICK.

**NOTES :** 1. MAXIMUM DIAMETER OF OPENING FOR 1", 2" AND 4" SLEEVES ARE 1-1/4", 2-7/16" AND 4-1/2", RESPECTIVELY.  
 2. ANNULAR SPACE BETWEEN CABLE BUNDLE AND PERIPHERY OF OPENING = MINIMUM 1/4", MAXIMUM 1-1/4".  
 3. CABLES TO FILL MAXIMUM 8% TO MAXIMUM 48% OF CROSS-SECTIONAL AREA OF SLEEVE.



HILTI, Inc.  
Tulsa, Oklahoma USA (918) 252-6000

Sheet	1 of 1
Scale	3/16" = 1"
Date	MAR. 25, 2005

Drawing No.  
**WL  
3273a**